



Dancing Honey Bee

Did you know Honey Bees communicate through dancing? After a bee finds food she returns to the hive and tells the other honey bee by dancing on the honey comb. The dance tells the other honey bees where the food is. The honey bee uses different dances to tell the other honey bees if the food is close or far away from their hive. There are many types of dances these bees do but the most common dances are the Round Dance and the Waggle Dance. Worker honey bees do the round dance when food is close to the hive. She will go round and round, first one way and then the other. Another dance they perform is the waggle dance, which they perform if the food is over 100 yards away from the hive. She will go in a half circle one direction, turn and runs straight while wagging her abdomen. Then proceeds in a half circle in the other direction. It will form a figure 8.

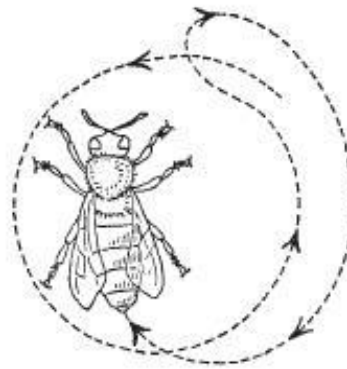
Activity: Let's Dance like the Honey Bee's

Materials:

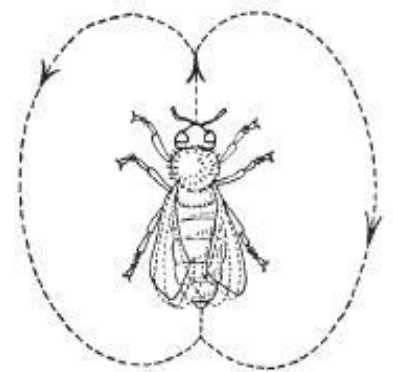
- Treat bags
- Tape

Directions:

1. Divide the class into two teams. Place a line of tape on the ground so it will help the worker bee perform the waggle dance.
2. Each team needs to select a leader worker honey bee, who will be the bee that finds the food source and will communicate to the team by doing the honey bee dance.
3. Have the team close their eyes and let the leader worker bee place the treat bag somewhere in the room.
4. The leader worker bee then will have to communicate where the bag of treats are. If the treats are close by they need to perform the round dance, spin round once in one direction and then spin round the in the other direction. If the treat is far away the leader will need to do the waggle dance, shake your bum walking in a straight line then turn and go in a half circle when you reach the line shake your bum again in a straight line and then go in a half circle in the other direction. Make sure you don't use any verbal or human body language!
5. Next the team needs to go out and try and find where the food source is the bag of treats!
6. Once both teams find the treat bags, discuss the difficulties and ease of communicating this way. Is a useful way to communicate if you don't have speech?



*Figure 1.
Round dance*



*Figure 2.
Waggle dance*