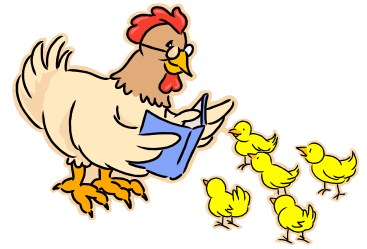


Which came first: the chicken or the egg?

K to 2nd Grades Pre-Trip

Life Cycle and Care of a Chicken



Summary of Field Trip

Students will have the opportunity to go to the Poultry Barn and learn from one of our knowledgeable Poultry Barn Volunteer Teachers. They will learn about the life cycle of a domesticated chicken and get the chance to watch chicks hatch in our Fair Hatchery. Students will also have the opportunity to hold and/or pet a baby chick that was born here at the fair. Our Fair Teachers will explain how farmers care for chickens, i.e. feeding, water, etc. Be sure to come with lots of questions!

Vocabulary

Life Cycle
Beak
Feather
Wing
Hen

Rooster
Chicks
Flock
Dawn
Hackles

Mate
Comb
Wattle
Spur

Objectives

- *Students will be able to explain orally or in writing the life cycle of a chicken.
- *Students will be able to define various vocabulary words related to the life cycle of a chicken.
- *Students will be able to explain orally or in writing how farmers care for chickens.

Massachusetts Frameworks

Life Science (Biology) PreK-2

1. Recognize that animals (including humans) and plants are living things that grow, reproduce, and need food, air, and water.
3. Recognize that plants and animals have life cycles, and that life cycles vary for different living things.
6. Recognize that people and other animals interact with the environment through their senses of sight, hearing, touch, smell, and taste.

Background Information

Chickens were one of the world's first domesticated animals. Today, chickens are raised by farmers for two products: eggs and meat. Chickens that are raised for these two products are called poultry. Other people do keep chickens as pets and/or to enter in contests/fairs.

A chicken is a bird that has a comb on the top of its head and two wattles underneath its chin. To help them scratch at the dirt, they have four-toed feet with very sharp claws on each toe. Even though chickens are birds, most cannot fly. The reason for this is because farm chickens have large heavy bodies and short wings. A female chicken is a hen, a male is a rooster, and a baby is a chick. They live in flocks, which are large groups of chickens. Within this group there is a pecking order.

Student Connections

Introduce all farm animals, highlighting chickens by using a read-aloud book. Start a discussion with students about who has ever seen a real chicken and if they know where eggs really come from (not the grocery store). Start getting them thinking about how we are different from chickens (like chickens laying and hatching from eggs).

Pre-Trip Lessons/Activities

(Use some or all of these to help introduce the topics before you join us at the Fair)

1. Create a diagram of a life cycle of a tree or a plant, to help students understand what a life cycle is.
Read Aloud Books (to go along with lesson):
The Plant Life Cycle By: Cheryl Jakab
The Life Cycle of an Oak Tree By: Ruth Thomson
2. Have students color and label, as a class, the various parts of a chicken.
3. Create a class list of the living things that grow, reproduce, and need food, air, and water.
4. Create a diagram of what people need to live (air, water, various types of food etc.) and a list of what the students think a chicken needs to live and grow.
5. Have students draw a picture with their answers to the question: Which came first, the chicken or the egg?

Resources

Children's Books:

Dalgleish, Sharon. Farm Animals: Chickens. Philadelphia: Chelsea Clubhouse, 2005.

Ray, Hannah. Down on the Farm: Chickens. Laguna Hills: QEB Publishing, Inc, 2006.

Nelson, Robin. Chickens. Minneapolis: Lerner Publications Company, 2009.

Green, Emily K. Farm Animals: Chickens. Minneapolis: Bellwether Media, 2007.

Hudak, Heather C. Farm Animals Chickens. New York: Weigl Publishers Inc, 2007.

Gibbons, Gail. Chicks & Chickens. New York: Holiday House, 2003.

Teacher Resources:

Damerow, Gail. Storey's Guide to Raising Chickens. North Adams: Storey Publishing, 2010.

Kopp, Linda. Keeping Chickens with Ashley English. New York: Lark Books, 2010.

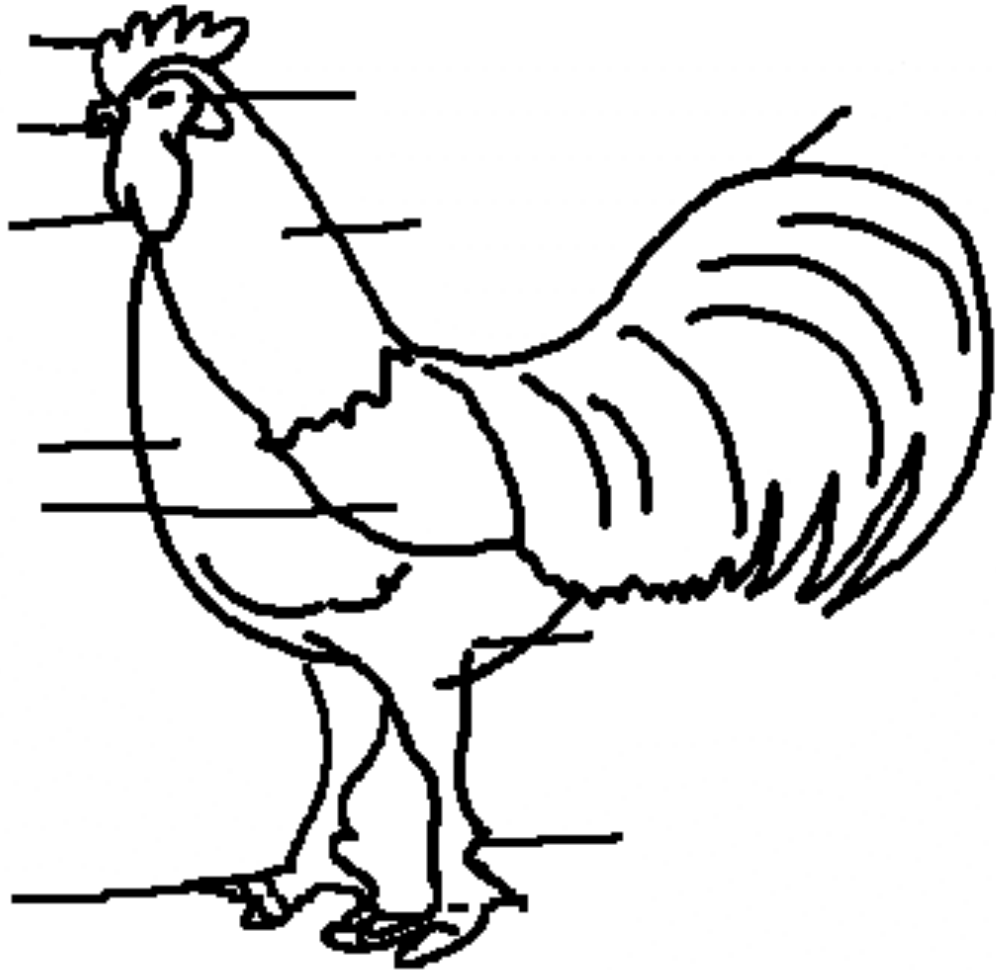
Name: _____

Date: _____

Label the following parts of a chicken:

Comb Beak Wattles Breast Wing Toes with Claws

Face Hackles Tail Thigh Spur



ANSWER KEY

